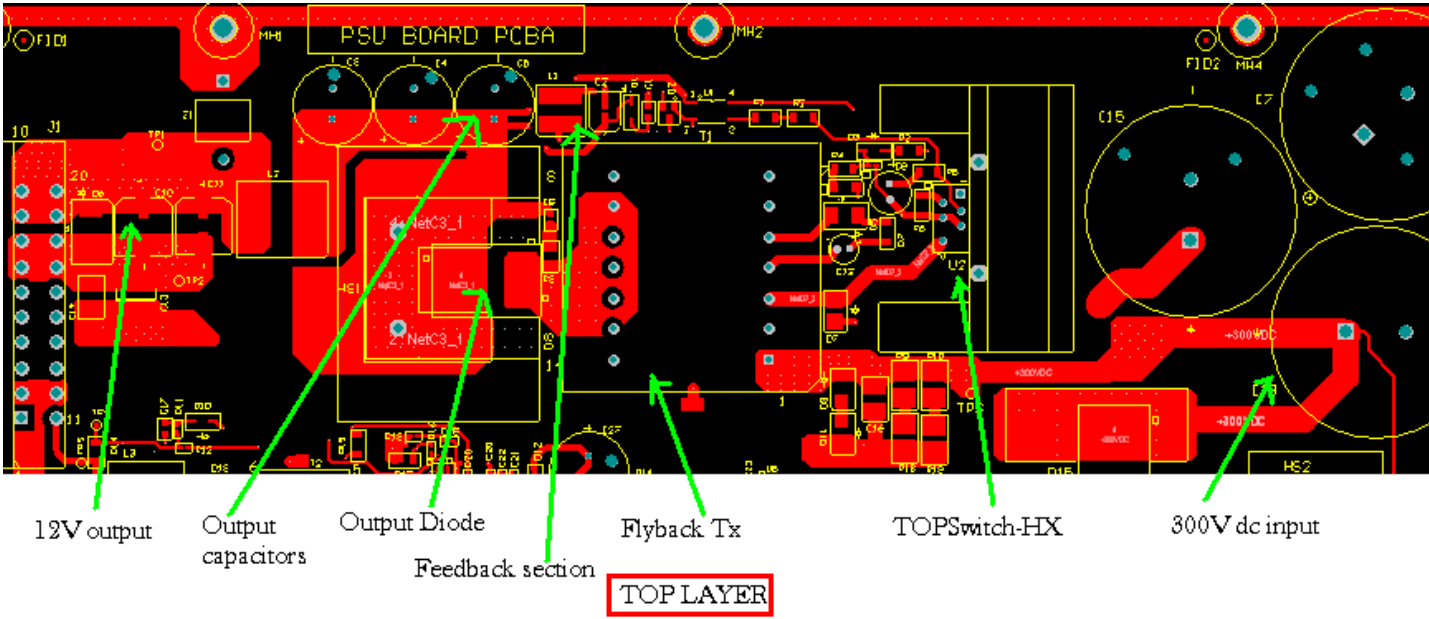
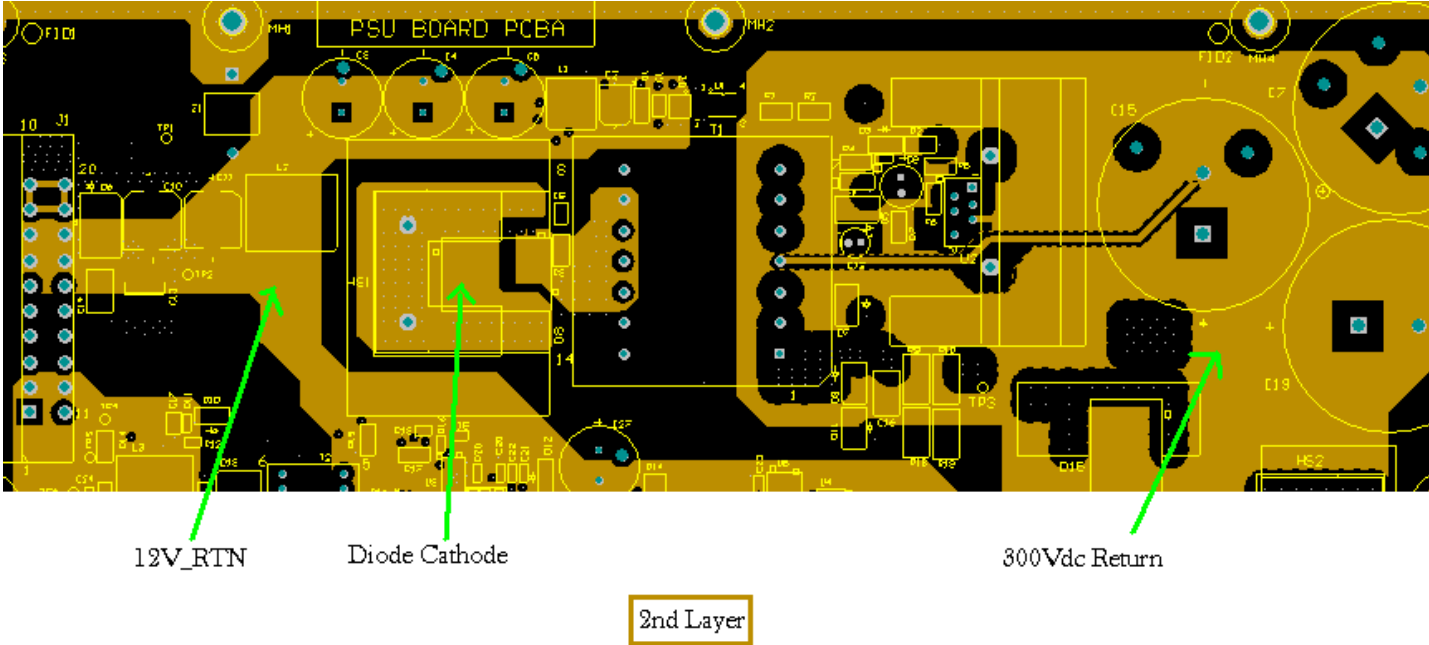


300Vdc –to-12V @10A fly back regulator using TOPSwitch-HX TOP257eN

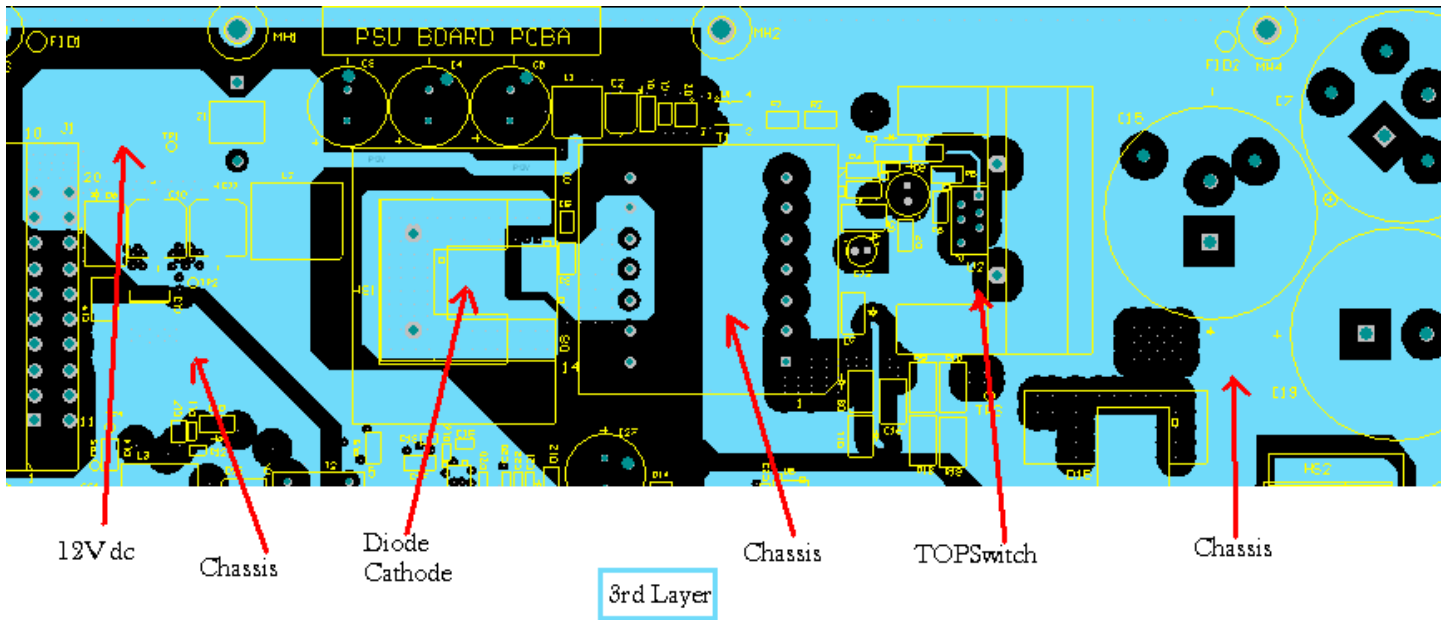
1. Top Layer:



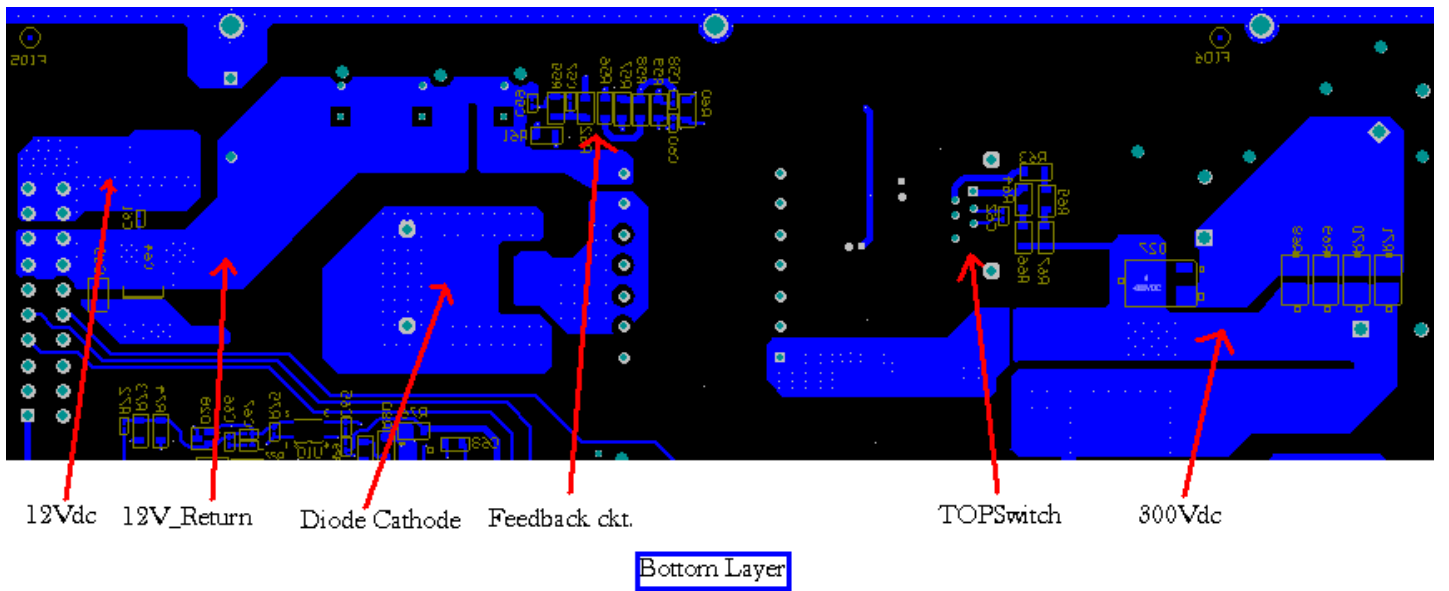
2. 2nd Layer:



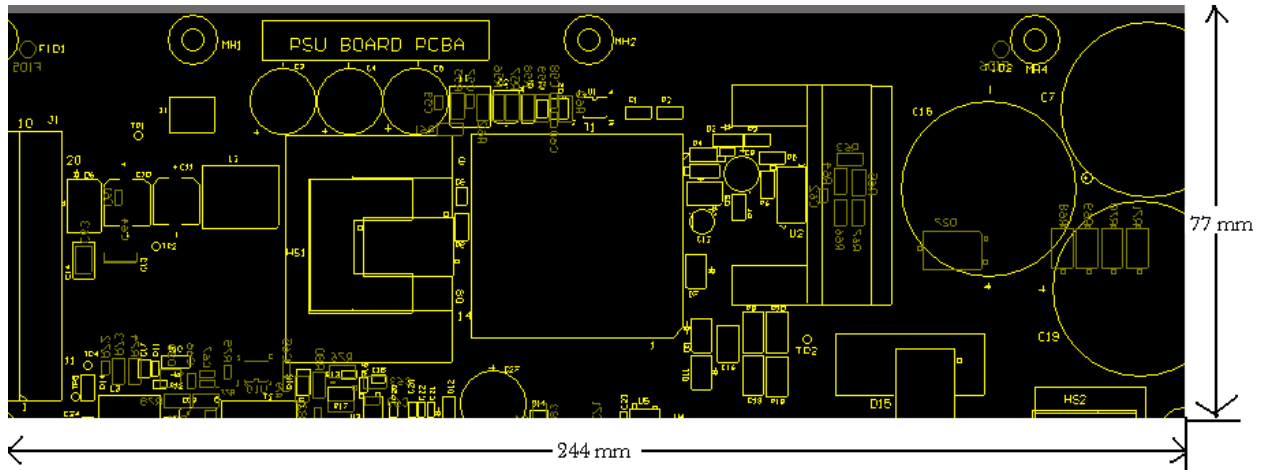
3. 3rd Layer:



4. Bottom Layer:

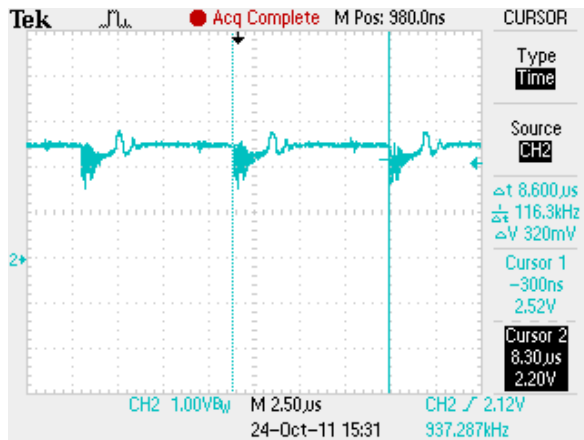


5. Dimensions of the converter section:

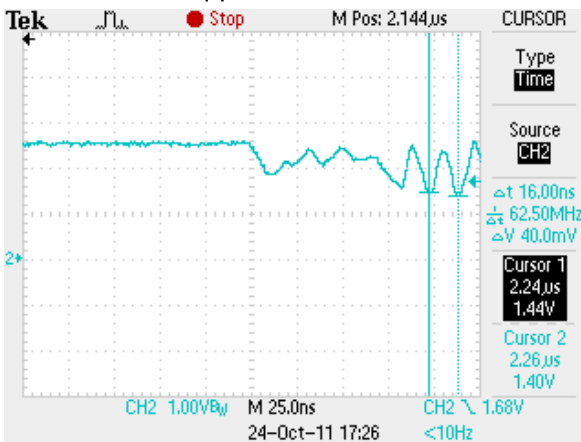


Waveforms:

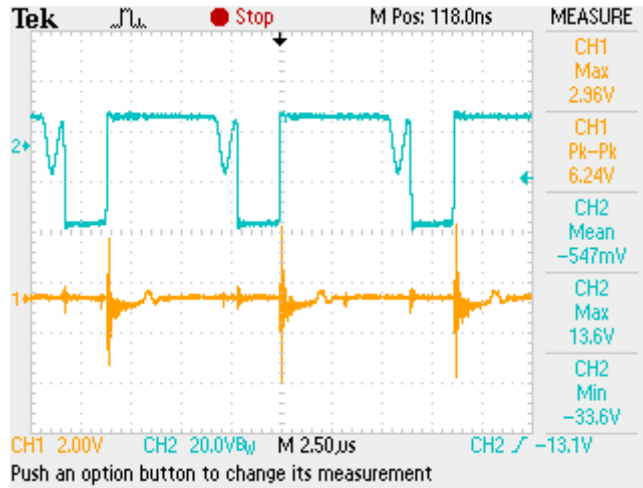
1. Vref-pin2-D2-TL431A



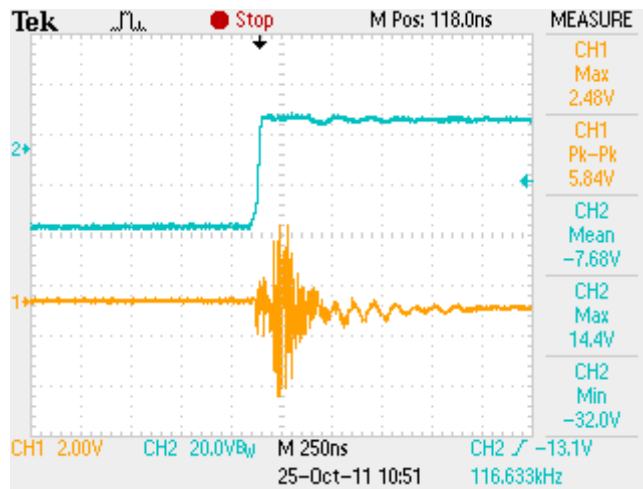
2. Noise-freq-pin2-D2:



3. Noise-on-12Voutput:



4. Noise-burst-output:



END OF DOCUMENT